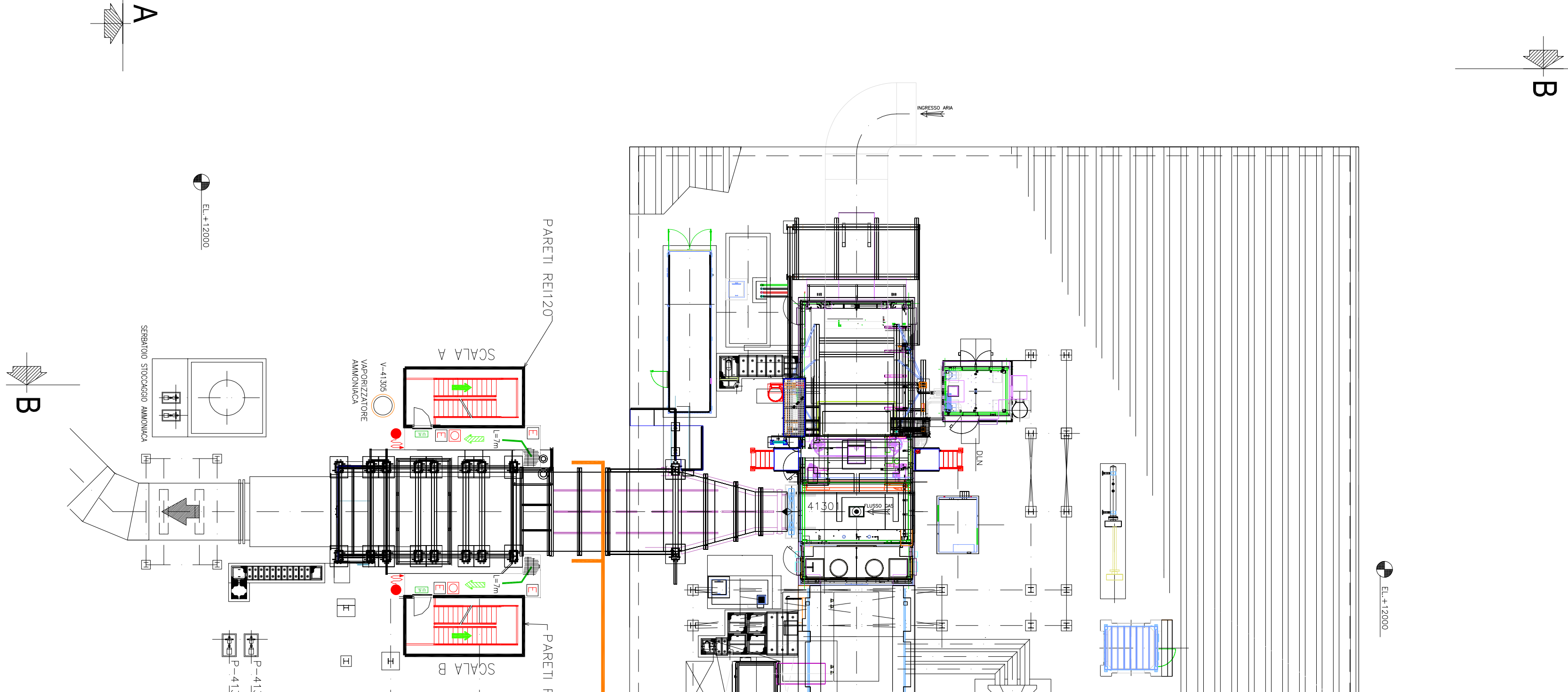


- NUOVA CONDOTTA SU RACK GAS P=5ba
- NUOVA VALVOLO DI SICUREZZA



PLANTA Q.ta +23196

The architectural floor plan depicts a large, complex building with multiple courtyards and a central courtyard. The building is oriented with its main entrance on the left side, facing a street labeled 'Gasse'. The central courtyard features a large fountain and is surrounded by various rooms, including a 'Küche' (kitchen) and a 'Bibliothek' (library). The plan also shows several smaller courtyards and a large 'Garten' (garden) area on the right side. The building's layout is characterized by a series of interconnected rooms and courtyards, with a central courtyard being the most prominent feature. The plan includes detailed architectural elements such as windows, doors, and furniture, providing a comprehensive view of the building's interior and exterior spaces.

[illegible]